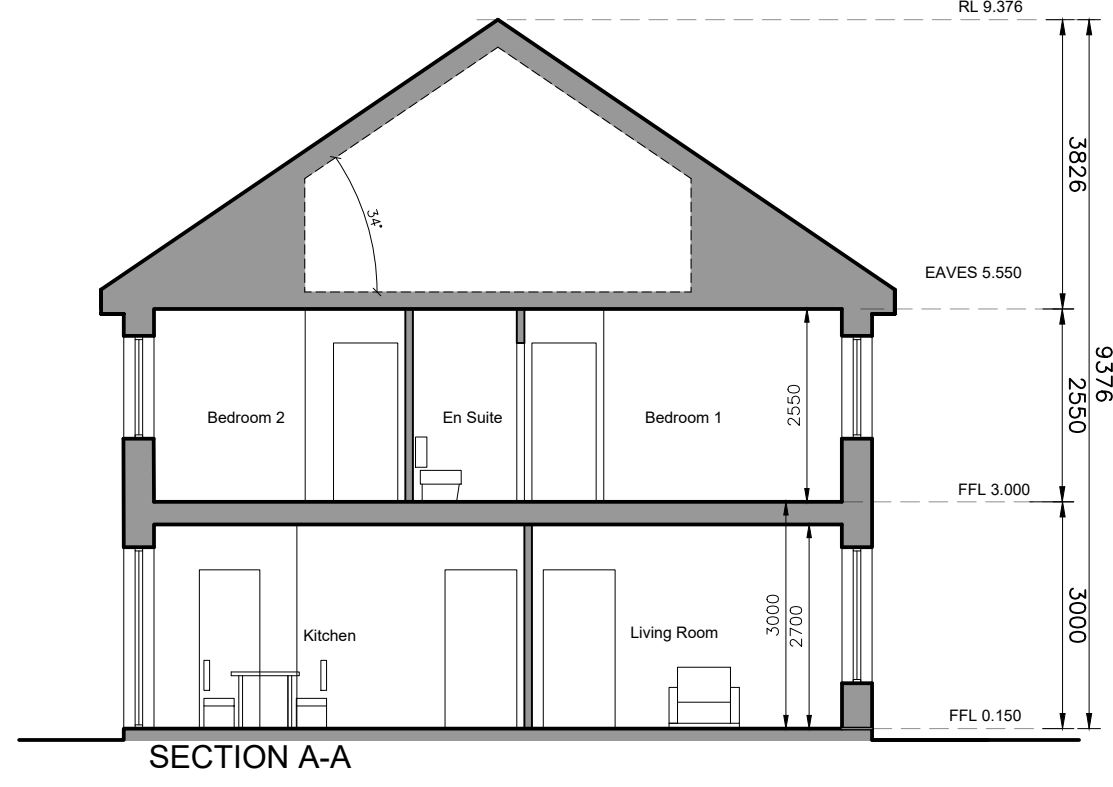
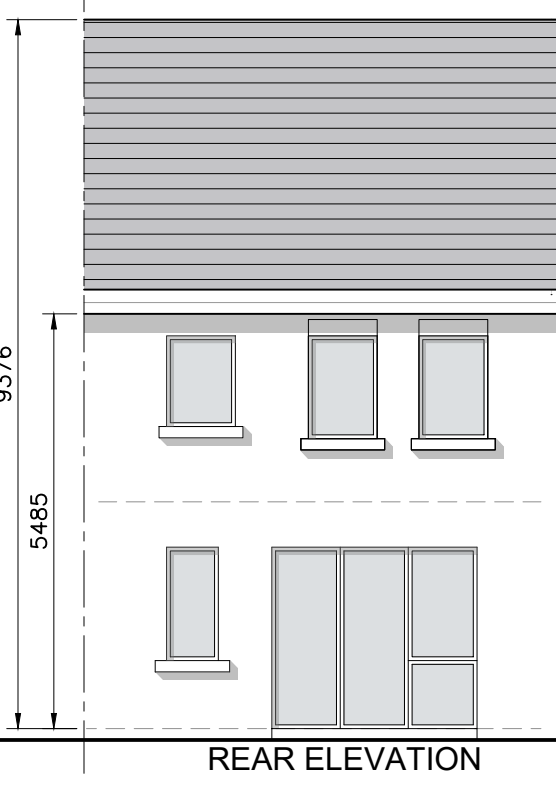
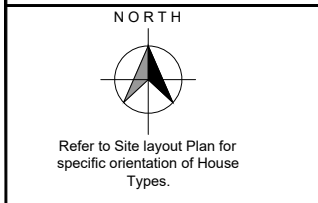


3-bed/5 person, 2 storey:		FCC Min.
Agg. Living	35.1	34
Agg. Bedrooms	33.9	32
Storage	9.7	5



- © This drawing is copyright.
- 1 Do not scale this drawing.
  - 2 Errors and omissions to be immediately notified to Architect.
  - 3 All dimensions to be checked on site.
  - 4 To be read with relevant Engineers drawings.



- Notes:**
1. All dimensions in millimetres
  2. Orientation varies. See site layout plan.
  3. This Housetype may be handed. See site layout plan.
  4. For proposed finished floor levels please refer to proposed site layout drawing.

**External Finishes:**

**Roof:**  
Slate or clay/concrete tiles with solar thermal or photovoltaic panels subject to orientation and detailed design

**Walls:**  
Painted render finish and/or Selected facing brick

**Windows:**  
uPVC framed

**Gutters/downpipes:**  
uPVC or aluminium

**Front Door:**  
Selected coloured composite or painted timber door with fanlight and/or sidelight and/or glazed light in leaf

revisions	description	date	inls
	House Type Ec		
	Plans, Section & Elevations		
	Development at Oldtown, Swords, Co. Dublin PHASE 5		
	Gerard Gannon Properties		
	Planning SHD Stage 3		
	<b>CONROY CROWE KELLY ARCHITECTS</b>		
	65 MERRION SQUARE DUBLIN 2		
	PHONE 66139901 FAX 6765715 e-mail info@cck.ie		